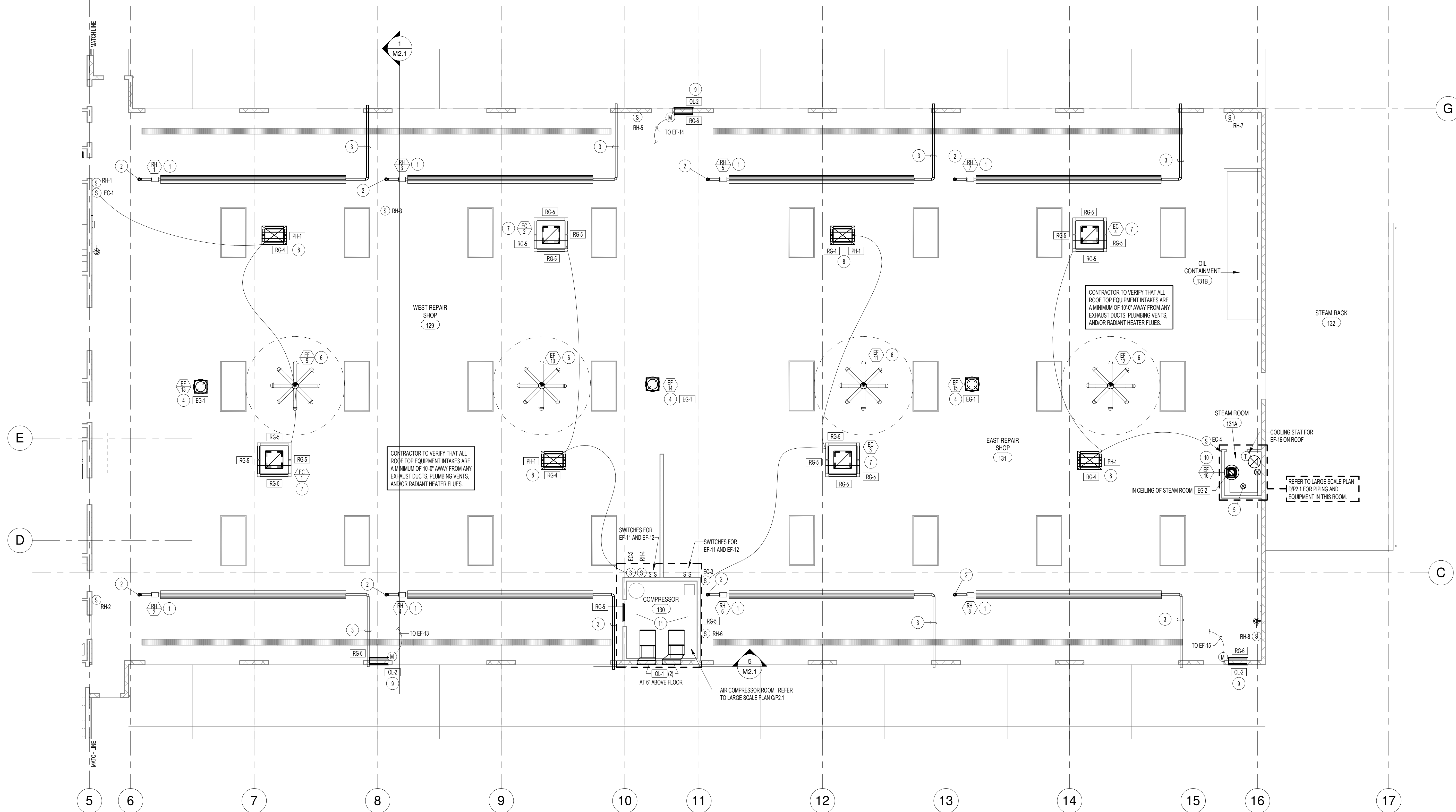
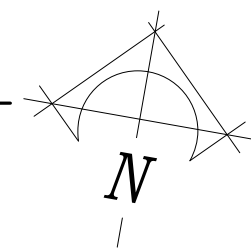


11/22/2019 10:37:00 AM Kenworth-Ogden (M&P)\_detached.rvt



### MECHANICAL FLOOR PLAN - PART 2

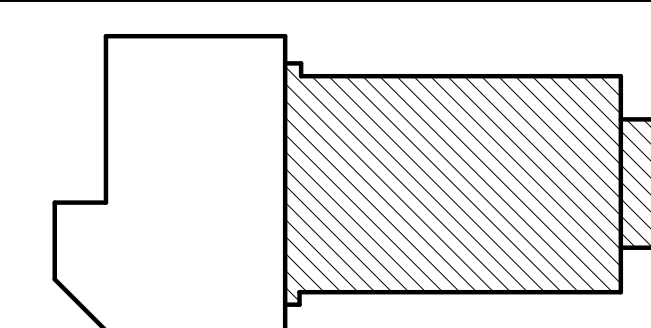
SCALE: 1/8" = 1'-0"



#### PLAN NOTES:

- 1 PROVIDE AND INSTALL TUBE HEATER WITH SHIELDS AS SPECIFIED. MOUNT HEATER AT 20'-0" ABOVE FLOOR AND MAINTAIN MANUFACTURER'S RECOMMENDED CLEARANCES FROM ALL MATERIALS. REFER TO DETAILS ON SHEET M3.2 FOR TYPICAL INSTALLATION.
- 2 RISE 4" DIA. INTAKE VENT UP THRU ROOF TO MINIMUM OF 12' ABOVE ROOF. PROVIDE WEATHER CAP. REFER TO DETAIL MM3.2 FOR TYPICAL INTAKE VENT INSTALLATION.
- 3 EXTEND 4" DIA. EXHAUST VENT THRU EXTERIOR WALL BETWEEN OVERHEAD DOORS. KEEP VENT AS HIGH AS POSSIBLE WITH 1/8" PER FOOT GRADE DOWN IN DIRECTION OF FLOW. TERMINATE EXHAUST VENT 6" AWAY FROM WALL SURFACE WITH 45 DEGREE CUT AND BUG SCREEN. REFER TO DETAIL LM3.2 FOR TYPICAL INSTALLATION.
- 4 MOUNT EXHAUST FAN AS SPECIFIED ON ROOF WITH ROOF CURB. DROP DUCTWORK DOWN THRU ROOF AND CONNECT TO GRILLE AT 6" BELOW ROOF DECK. REFER TO DETAIL DM3.1 FOR TYPICAL INSTALLATION. INTERLOCK EXHAUST FAN WITH CORRESPONDING INTAKE LOUVER NEAR FLOOR.
- 5 FIELD VERIFY ACTUAL LOCATION OF VENDOR FURNISHED PRESSURE WASHER EQUIPMENT. CONNECT 1" DIA. FLUE TO EQUIPMENT AND RISE UP THRU ROOF WITH WEATHER CAP. FIELD VERIFY ACTUAL SIZE OF FLUE REQUIRED FOR EQUIPMENT PROVIDED AND MATCH EQUIPMENT SIZE.
- 6 SUPPORT 16" DIAMETER CIRCULATING FAN AS SPECIFIED FROM ROOF STRUCTURE. MOUNT ABOVE BRIDGE CRANE EQUIPMENT. CONTROL WITH SWITCH MOUNTED ON COMPRESSOR ROOM WALL.
- 7 PROVIDE AND INSTALL EVAPORATIVE COOLER ON ROOF WITH ROOF CURB. DROP 3/4" DIA. DUCTWORK DOWN THRU ROOF AND CAP BOTTOM OF DUCT AT 18" BELOW BOTTOM OF ROOF JOISTS. PROVIDE DUCT TRANSITION AS REQUIRED. REFER TO DETAIL LM3.1 FOR TYPICAL INSTALLATION.
- 8 PROVIDE AND INSTALL RELIEF AIR PENTHOUSE ON ROOF WITH ROOF CURB. REFER TO DETAIL BM3.1 FOR MOUNTING ON ROOF. DROP 3/4" DIA. DUCT DOWN TO 6" BELOW ROOF DECK. PROVIDE MOTORIZED DAMPER IN BOTTOM OF DUCT AND INTERLOCK WITH CORRESPONDING EVAPORATIVE COOLER.
- 9 INSTALL OUTSIDE AIR LOUVER AND RETURN GRILLE AS SPECIFIED. MOUNT BOTTOM OF GRILLE AT 9' ABOVE FLOOR. PROVIDE MOTORIZED DAMPER IN DUCT AND INTERLOCK WITH ROOF MOUNTED EXHAUST FAN AS CALLED OUT. REFER TO DETAIL GM3.1 FOR TYPICAL INSTALLATION.
- 10 MOUNT EXHAUST FAN ON ROOF WITH ROOF CURB. DROP 10x10 DUCT DOWN THRU ROOF AND THRU MEZZANINE FLOOR. CONNECT TO GRILLE IN CEILING OF COMPRESSOR ROOM. CONTROL ROOF MOUNTED FAN WITH WALL MOUNTED COOLING STAT.
- 11 MOUNT BOTTOM OF 30x16 RETURN AIR GRILLE IN WALL AT 7'-6" ABOVE FLOOR. PROVIDE 30x16 SOUND BOOT (WITH 1" ACUSTICAL LINER) AND DROP DOWN TO 6'-6" ABOVE FLOOR. COORDINATE GRILLE AND SOUND BOOT LOCATION WITH EQUIPMENT AND PIPING IN ROOM AND WITH STRUCTURAL CROSS BRACINGS IN WALLS.

#### KEY PLAN



#### GENERAL NOTES:

- A- THE CONTRACTOR SHALL CHECK AND VERIFY ALL DIMENSIONS AND CONNECTIONS ON THE JOB SITE. ALL WORK SHALL BE EXECUTED FROM MEASUREMENTS TAKEN AT THE SITE.
- B- THE MECHANICAL CONTRACTOR SHALL BE RESPONSIBLE TO INSURE PROPER CODE CLEARANCES FOR ELECTRICAL AND MECHANICAL ACCESS WHEN INSTALLING ANY EQUIPMENT SUPPLIED BY THE MECHANICAL CONTRACTOR.
- C- IT IS CRITICAL THAT THIS CONTRACTOR COORDINATE EQUIPMENT LOCATIONS WITH PIPING, DUCTWORK, ELECTRICAL CONDUIT AND BUILDING STRUCTURE TO INSURE CODE COMPLIANCE.
- D- CEILING DIFFUSERS ARE SHOWN IN APPROXIMATE LOCATIONS. REFER TO LIGHTING PLANS AND REFLECTED CEILING PLAN FOR EXACT LOCATIONS.
- E- DUCT DIMENSIONS CALLED OUT ON DRAWINGS ARE INSIDE FREE AREA DIMENSIONS. ACUSTICAL DUCT LINER ARE TO BE ADDED TO OVERALL MEASUREMENTS.
- F- ALL DUCTWORK AND PIPING WHICH PASSES THRU FIRE RATED WALLS TO BE FIRE STOPPED WITH APPROVED FOAM OR SEALANT. REFER TO SPECIFICATIONS FOR APPROVED MANUFACTURERS.

**Engineered Systems Associates**  
 1355 EAST CENTER  
 POCATELLO, IDAHO 83201  
 PHONE: (208) 233-0501  
 FAX: (208) 233-0529  
 EMAIL: esa@engsysltns.com  
 ESA JOB NUMBER: 19035

PROJECT NO. 16066  
 DATE: NOVEMBER 2019  
 DRAWN BY: M. Jensen  
 CHECKED BY: D. Sudweeks

DRAWING NO.:

# M1.2

**nw architects p.a.**  
 ARCHITECTURE / PLANNING / INTERIORS  
 SCOTT L NELSON A.I.A. KEVIN R BODILY A.I.A. JAMES H WYATT A.I.A.  
 990 JOHN ANDRUS PARKWAY P.O. BOX 2212 - IDAHO FALLS, IDAHO 83402-2212  
 (208) 208-5322 (208) 208-5322 (208) 208-5322

A NEW BUILDING FOR:  
**KENWORTH SALES COMPANY INC.**  
 1750 SOUTH 1350 WEST  
 NEW HAVEN, UTAH

MECHANICAL FLOOR PLAN - PART 2

SHEET TITLE:

#### REVISIONS

NO.	DESCRIPTION